



Technical Data

Surface Boxes And Blank Plates

Brief product description:

The subtle design will blend with any décor - suitable for domestic or commercial installations.

Features:

- Stylish modern profile
- Easy installation
- Covers to conceal fixing screws
- Surface boxes have multiple knock-outs and earth terminal fitted as standard
- Spacers provide greater clearance for installation wiring where shallow mounting boxes are used, an alternative to fitting a deeper box

Product Images



817



818



836



837



838



891/893



892



894



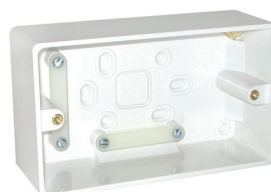
895



896



877



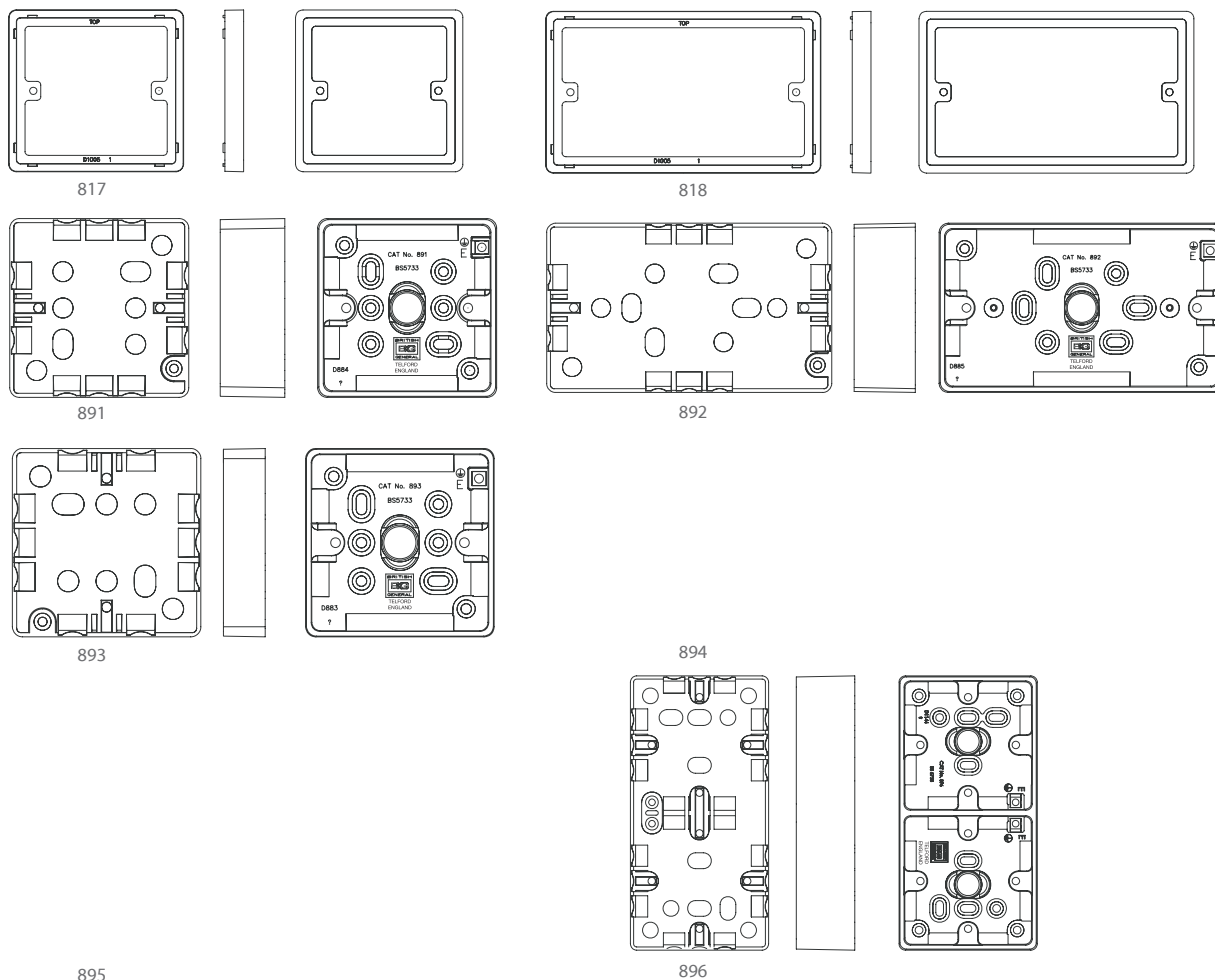
878

Surface Boxes And Blank Plates

Technical Specifications

Standard(s)	BS5733
Fixing Centres	60.3mm (817, 836, 894 products)
	120.6mm (818, 895 products)
Size	86mm x 86mm x 6.9mm (894 product)
	86mm x 86mm x 10mm (817 product)
	86mm x 86mm x 32mm (891 product)
	86mm x 86mm x 19.5mm (893 product)
	86mm x 86mm x 50mm (877 product)
	87.5mm x 33mm x 19mm (837 product)
	146.5mm x 86mm x 6.9mm (895 product)
	146.5mm x 86mm x 10mm (818 product)
	146.5mm x 86mm x 32mm (892 product)
	172mm x 86mm x 37mm (896 product)
	146.5mm x 86mm x 50mm (878 product)
	87.5mm x 33mm x 19mm (837 product)
	147.5mm x 33mm x 19mm (838 product)

Line Diagrams



Surface Boxes And Blank Plates

Line Diagrams

877

878

836

837

838

Packaging Information

Cat No.	Description	Packaging Type			Pack Quantity			Barcode		
		Product	Inner Box	Outer Box	Each	Inner Box	Outer Box	Individual	Inner Box	Outer Box
817	1G, 10mm Sq	Nexus PolyBag	Nexus Inner	Nexus Outer	1	20	200	5050765002745		
818	2G, 10mm Rect	Nexus PolyBag	Nexus Inner	Nexus Outer	1	10	100	5050765002776		
891	1G, 32mm Box	Nexus PolyBag	Nexus Inner	Nexus Outer	1	10	100	5050765000017		
892	2G, 32mm Box	Nexus PolyBag	Nexus Inner	Nexus Outer	1	5	50	5050765000048		
893	1G, 19mm Box	Nexus PolyBag	Nexus Inner	Nexus Outer	1	10	100	5050765000079		
894	1G Blank Plate	Nexus PolyBag	Nexus Inner	Nexus Outer	1	20	200	5050765000109		
895	2G Blank Plate	Nexus PolyBag	Nexus Inner	Nexus Outer	1	10	100	5050765000130		
896	37mm, Dual Box	Nexus PolyBag	Nexus Inner	Nexus Outer	1	5	50	5050765000161		
877	1G, 50mm Box	Nexus PolyBag	Nexus Inner	Nexus Outer	1	10	100	5050765000222		
878	2G, 50mm Box	Nexus PolyBag	Nexus Inner	Nexus Outer	1	5	50	5050765000253		
836	1G, Arch Blank	Nexus PolyBag	Nexus Inner	Nexus Outer	1	20	200	5050765018067		
837	1G, Arch Blank, 19mm	Nexus PolyBag	Nexus Inner	Nexus Outer	1	20	200	5050765018074		
838	2G, Arch Blank, 19mm	Nexus PolyBag	Nexus Inner	Nexus Outer	1	10	100	5050765018081		

Weights & Dimensions

Cat No.	Description	Dimension (W x L x H) cm			Weight (g)			CMB (m ³)
		Product	Inner Box	Outer Box	Each	Inner Box	Outer Box	Outer Box
817	1G, 10mm Sq	9.2 x 9.2 x 3.2	19 x 18 x 9.2	39 x 49.5 x 19	72	754	8000	0.03
818	2G, 10mm Rect							
891	1G, 32mm Box	9.2 x 9.2 x 3.2	16.8 x 18 x 9.2	35 x 49.5 x 19	74.5	875	9400	0.032
892	2G, 32mm Box	9.2 x 15.2 x 3.2	15 x 18 x 9.2	31 x 49.5 x 19	70.5	644	7000	0.029
893	1G, 19mm Box	9.2 x 9.2 x 1.95	10.5 x 18 x 9.2	22 x 49.5 x 19	56	691	7340	0.02
894	1G Blank Plate	9.2 x 9.2 x 7.1	12.5 x 18 x 9.2	26 x 49.5 x 19		854	9000	0.024
895	2G Blank Plate	9.2 x 15.2 x 7.1	12.5 x 15 x 9.2	26 x 49.5 x 16	81	693	7400	0.02
896	37mm, Dual Box	9.2 x 17.8 x 3.7	19 x 18 x 9.2	39 x 49.5 x 19	179	1010	10800	0.03
877	1G, 50mm Box	9.2 x 9.2 x 5	18 x 26.5 x 9.2	37.5 x 49.5 x 27.5		1453	15500	0.05
878	2G, 50mm Box	9.2 x 15.2 x 5	15 x 26.5 x 9.2	31.5 x 49.5 x 27.5	187	1031	11000	0.042
836	1G, Arch Blank							
837	1G, Arch Blank, 19mm							
838	2G, Arch Blank, 19mm							

Surface Boxes And Blank Plates

Installation Information

Safety Warning

Before use please read carefully and use in accordance with these safety wiring instructions.

Before commencing any electrical work ensure the supply **is switched off at the mains**. Either by switching off the consumer unit or by removing the appropriate fuse.

Wiring should be in accordance with the latest edition of the IEE regulations (BS 7671).

Wire Identification – Twin & Earth Cable

EARTH = Green/Yellow Sleaving

NEUTRAL = Black (pre Apr 04) / Blue (after Apr 04)

LIVE = Red (pre Apr 04) / Brown (after Apr 04)



Technical Helpline: 0845 194 7584
If in doubt consult a competent electrician.

The ends of the individual conductors should have the insulation removed by approx. 12mm. Any bare earth conductors should be sleeved to within 12mm of the ends. (These details are for general information only and conductor lengths may need to be trimmed in certain installations).